



Club Car

ALWAYS DRIVEN

Club Car

**IR** Ingersoll Rand

A close-up photograph of the front corner of a green Club Car utility vehicle. The image shows a large, oval-shaped headlight with a clear lens and a smaller, rectangular amber turn signal light below it. The green body of the vehicle is highly reflective, showing highlights from the ambient light. The background is dark and out of focus.

# Always Driven.

For 30 years Club Car® has built utility vehicles for the dawn-to-dusk work ethic because maintaining a golf property is no part-time affair. It's all-in or nothing. We're just as serious about building Carryalls. There are a thousand jobs out there. For those driven to get them done, Carryall will always be there.







Redesigning the legendary Carryall is not a job you take on lightly. Or alone. Club Car® traveled the world to gauge what customers wanted. Their vision became our mission. Built on our 30-year legacy of performance and dependability, the all-new Carryall is more more powerful, versatile, efficient and comfortable, more of what makes Carryall the most valued utility vehicle in golf. 1,000 Jobs. Only One Carryall.



# The Legend. Reborn.



## **Electronic Fuel Injection:**

A muscular, 14 horsepower rated engine that also reduces fuel consumption by up to 50%.



## **Rugged Bed Box:**

Rhino® lining protects floor. Ingenious bed box rail system organizes and secures cargo.



## **IQ Plus Electric Drive**

**System:** Across the line upgrades integrate new high-efficiency charging systems, improved amp hour tracking and charge confirmations.



## **Auto Styling and**

**Ergonomics:** Inspired by the pickup you drive to work.

# New EFI Engine:

More climb, less dime.





At the heart of the redesigned Carryall hums our new power plant, developed by Subaru and sporting a 14 horsepower rated engine. The overhead cam engine with electronic fuel injection (EFI) delivers a 30% power boost and still reduces fuel consumption by up to 50%.

### **Save on more than just fuel costs.**

- Build quality, including case-hardened steel timing chain, lowers maintenance costs
- Runs cooler, quieter, with lower emissions
- Weathers all conditions; starts fast even on the coldest mornings
- Automatically adjusts for higher altitudes
- No carburetor or choke to master or maintain
- No oil filter to change; splash lubrication reduces maintenance
- Backed by the industry's best warranty



# Every Carryall is dressed for golf.



## **Heavy-Duty Brush Guard:**

Protection for those trips off the beaten path.



**Durable Bed Box:** Rust-proof, aircraft-grade aluminum with Rhino®-lined floor.



**Green Cowl:** The standard color designating golf utility vehicles.





Does any crew work like golf crews work? Not likely. Up before dawn, at it until nightfall chases you off the course, with a 1,000 different jobs in between. That's why we equip Carryalls for the unique demands of the golf operation. Your new vehicles arrive equipped and ready for the chores you encounter every day. From brush guard to trailer hitch, work with the best-dressed vehicles in golf.



**Differential Guard:** Protects the differential from damage in rugged terrain.



**Turf-Friendly Tires:** Bigger for more ground clearance, gentler on the turf.



**Heavy-Duty Trailer Hitch:** Built to handle heavy loads.

# CARRYALL 500 TURF



## Carryall 500 Turf: Call in the muscle.

With 60% more bed capacity and 67% more towing capacity than the 550, Carryall 500 Turf is our flagship utility vehicle and the undisputed strong man in the 5-series. This economical yeoman is designed to take on big loads and demanding conditions to cut your biggest chores down to size.



# Make molehills out of mountains of work.



## Carryall 550 Turf: The go-where-you-need-it utility vehicle.

With larger tires and higher ground clearance, Carryall 550 Turf can get in and out of places other vehicles avoid. And with its ample 226 kg bed capacity, the 550 is the smart choice for medium-duty chores anywhere on the course where the terrain is challenging.



# CARRYALL 550

TURF

CARRYALL 700  
TURF

## Fit-to-task and **fiscally fit**



### **Built for the long haul.**

Now available with the newly enhanced IQ Plus electric drive system and the all-new EFI gas engine, it's all about return on investment and nothing carries that responsibility like the Carryall 700 Turf. With 680 kg of capacity and almost 183 cm of cargo bed, the 700 lives to handle your operation's most demanding jobs, all day long.



## Versatility in a nimble package.

Carryall 300 Turf is a multi-tasking dynamo that can handle just about any light duty chore thrown its way. With either the new Subaru gas engine or our all-new electric system anchored by our new connected charger, E.R.I.C., driving its 408 kg capacity, the 300 is a sun-up-to-sundown laborer and hill-climbing whiz.

**E.R.I.C.**  
EFFICIENT RELIABLE INTELLIGENT CONNECTED



The Carryall 300 Turf is the only utility vehicle equipped with E.R.I.C., Club's Car's all-new, advanced charging system. Efficient. Reliable. Intelligent. Connected. E.R.I.C. does it all. With cutting-edge features built into a smaller, lighter and infinitely smarter design, E.R.I.C. will have an immediate impact on your operation.



# CARRYALL 300 TURF



CARRYALL 1500

Makes its mark by  
**not leaving any.**



Carryall 1500 2-WD—heavy-duty capabilities that treads lightly on turf and improved surfaces.

Two-wheel drive features include:

- Rear-wheel drive
- 23" front / 24" rear turf tires
- Handles up to 476 kg of payload or 680 kg with high-capacity option
- 30.5 km/h maximum speed

(Not available in the EU and other countries requiring CE mark)





## Carryall 1500 4-WD

When the job calls for more pull, Carryall 1500 4-WD answers the call.

- IntelliTrak® senses the terrain, delivers power to the front wheels when needed
- 25" all-terrain tires and 30.7 cm clearance handle demanding and tough conditions
- 4-wheel hydraulic disc brakes
- 40 km/h maximum speed
- Roll Over Protective Structure (ROPS) certified to meet five different international standards



**Versatility**  
right on track.





Club Car®'s all new bed box rail system expands your bed's payload while securing whatever's on board. Sturdy channels engineered into the walls of the cargo box accept a variety of attachments—cleats, hooks and clamps—for storing, tying down and protecting tools and gear in transit.



Bed dividers help segregate and secure any size load.



Add/remove/relocate clamps and tie downs to fit your cargo.



Reinforced aluminum channels can handle almost any load.



A variety of equipment – cleats, hooks, clamps – are available to fit the tool and cargo.



Secure expensive power tools, protecting them from transit damage.



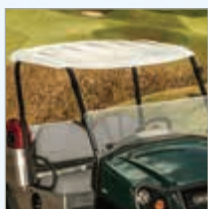
Attachment clamps are injection molded for solid fit and dependable performance.

# ACCESSORIES

## Equip your vehicles for maximum performance and comfort.

Every standard Carryall is ready to outwork, outperform and outlast everything else in its class. But when you want to tailor your vehicles to perform specialized tasks or adapt to the unique needs of your operation, Club Car® has the accessories and options to build out your Carryalls to perfection. Every accessory is designed and built specifically to work with Club Car vehicles.

### 4 x 2 accessories



Canopy Top



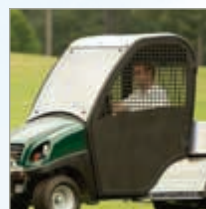
Heavy Duty  
Brush Guard



Stake-Side Kit



Receiver Hitch



Driving Range  
Protective Enclosure



Electric Bed Lift



ROPS Cab (Roll Over  
Protective Structure)



Cab Outside Mirrors



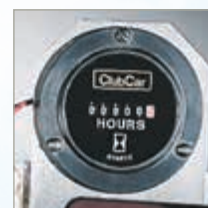
Halogen Work Lights



Accessory Switch  
Panel



Differential Guard



Hour Meter



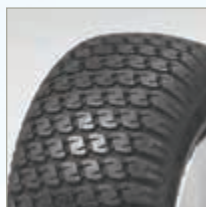
Fuel Gauge/Hour  
Meter



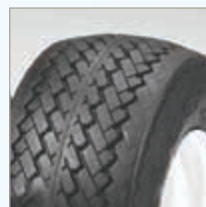
Heavy Duty Batteries



Battery Capacity  
Indicator



Extra-Traction  
Turf Tires



Premium Tread  
6-Ply Tires

### PHOTOS UNAVAILABLE:

- Universal Ball Picker Mount
- Flatbed Tool Box
- Van Box
- Cargo Box Tool Box
- All-Terrain Tires
- Mud Tires



## 4 x 4 accessories



Lighting Package  
(horn, turn signals, brake  
lights)



Plastic Canopy Top



Custom Van Box



Rear Cargo Cage



Electric Bed Lift



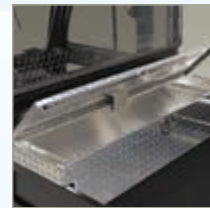
Underhood Storage  
(Gas Only)



Stake-Side Kit



2-Inch Front  
Receiver Hitch



Cargo Bed Toolbox



Pintle Hitch



Nerf Bars

Not all accessories are available in all markets. Contact an authorized Club Car dealer for more information.

# SPECIFICATIONS



**CARRYALL 300 TURF**



**CARRYALL 500 TURF**

	CARRYALL 300 TURF		CARRYALL 500 TURF	
POWER SOURCE	ELECTRIC	GASOLINE	ELECTRIC	GASOLINE
ENGINE/MOTOR TYPE	48-volt DC	Subaru, 4-cycle	48-volt DC	Subaru, 4-cycle
CONTROLLER	500 Amp - Solid State	NA	500 Amp - Solid State	NA
DISPLACEMENT	NA	404 cc	NA	404 cc
CYLINDERS	NA	Single	NA	Single
VALVING	NA	Overhead Cam	NA	Overhead Cam
COOLING	NA	Air Cooled	NA	Air Cooled
HORSEPOWER (RATED)	3.3 hp (2.4 kW) rated, Peak 13 hp (9.6 kW)	14.0 hp (10.3 kW) rated @ 3600 RPM per SAE J1940	3.7 hp (2.7kW) rated, Peak 20 hp (14.9 kW)	14.0 hp (10.3 kW) rated @ 3600 RPM per SAE J1940
MAX TORQUE	34.5 ft-lb (46.7 N-m) rated @ 1980 rpm	19.91 ft lb (27.0 N-m) rated @ 2400 RPM	71 ft-lb (96.2 N-m) rated @ 1450 RPM	19.91 ft lb (27.0 N-m) rated @ 2400 RPM
LUBRICATION	NA	Splash lubrication	NA	Splash lubrication
GOVERNOR	NA	Ground Speed	NA	Ground Speed
TRANSMISSION	Direct drive, double reduction helical gear	Continuously Variable Transmission (CVT)	Direct drive, double reduction helical gear	Continuously Variable Transmission (CVT)
FRONT/REAR DIFFERENTIAL	NA	NA	NA	NA
GEAR SELECTION	Forward/Neutral/Reverse	Forward/Neutral/Reverse	Forward/Neutral/Reverse	Forward/Neutral/Reverse
GEAR RATIO	12.32:1	11.47:1 forward; 15.63:1 reverse	12.32:1	11.47:1 forward; 15.63:1 reverse
IGNITION	NA	Electronic	NA	Electronic
BATTERY	Six 8-volt Flooded Lead Acid	12-volt 500 CCA 105 min Reserve	Eight 6-volt Flooded Lead Acid	12-volt 500 CCA 105 min Reserve
CHARGER	ERIC (650 W High Frequency)	NA	DeltaQ QuiQ (1 kW High Frequency)	NA
HEADLIGHTS	Two 37.5 Watt Halogen	Two 37.5 Watt Halogen	Two 37.5 Watt Halogen	Two 37.5 Watt Halogen
FUEL DELIVERY SYSTEM	NA	Electronic Fuel Injection (EFI)	NA	Electronic Fuel Injection (EFI)
FUEL CAPACITY	NA	17.4 L	NA	17.4 L
STEERING MECHANISM	Self-adjusting Rack and Pinion	Self-adjusting Rack and Pinion	Self-adjusting Rack and Pinion	Self-adjusting Rack and Pinion
SUSPENSION (FRONT)	Independent leaf spring with dual hydraulic shocks	Independent leaf spring with dual hydraulic shocks	Independent leaf spring with dual hydraulic shocks	Independent leaf spring with dual hydraulic shocks
SUSPENSION (REAR)	Semi-independent leaf spring with dual hydraulic shocks	Semi-independent leaf spring with dual hydraulic shocks	Semi-independent leaf spring with dual hydraulic shocks	Semi-independent leaf spring with dual hydraulic shocks
BRAKES	Rear Mechanical Drum	Rear Mechanical Drum	4-wheel Mechanical Drum	4-wheel Mechanical Drum
PARK BRAKE	Foot Operated, Multi-lock	Foot Operated, Multi-lock	Foot Operated, Multi-lock	Foot Operated, Multi-lock
BODY (FRONT & FINISH)	ArmorFlex with automotive paint/ clearcoat	ArmorFlex with automotive paint/ clearcoat	ArmorFlex with automotive paint/ clearcoat	ArmorFlex with automotive paint/ clearcoat
BODY (FRAME AND REAR)	Aluminum	Aluminum	Aluminum	Aluminum
TIRES (FRONT)	20 x 10-10, 6-ply	20 x 10-10, 6-ply	20 x 10-10, 6-ply	20 x 10-10, 6-ply
TIRES (REAR)	20 x 10-10, 6-ply	20 x 10-10, 6-ply	20 x 10-10, 6-ply	20 x 10-10, 6-ply
WHEELBASE	166.3 cm	166.3 cm	198.3 cm	198.3 cm
OVERALL HEIGHT	119.6 cm	119.6 cm	119.6 cm	119.6 cm
OVERALL LENGTH	279.6 cm	279.6 cm	299.7cm	299.7cm
BED L X W X H (CARGO BOX)	91.9 x 120.6 x 26.6 cm	91.9 x 120.6 x 26.6 cm	112.2 x 120.6 x 26.6 cm	112.2 x 120.6 x 26.6 cm
DIFFERENTIAL GROUND CLEARANCE	14.2 cm	13.2 cm	14.2 cm	13.2 cm
TRACK WIDTH (FRONT)	92.9 cm	92.9 cm	92.9 cm	92.9 cm
TRACK WIDTH (REAR)	100.3 cm	100.3 cm	100.3 cm	100.3 cm
MAX WIDTH (W/O MIRRORS)	127.7cm	127.7cm	127.7cm	127.7cm
CURB WEIGHT (W/ BATTERIES)	501.2 kg	370. 5 kg	631.8 kg	411.4 kg
TOTAL VEHICLE CAPACITY	362.8 kg	362.8 kg	544.3 kg	544.3 kg
BED LOAD CAPACITY	136.0 kg	136.0 kg	362.8 kg	362.8 kg
TOWING CAPACITY	362.8 kg	362.8 kg	544.3 kg	544.3 kg
COMBINED GROSS VEHICLE CAPACITY	362.8 kg	362.8 kg	680.3 kg	680.3 kg
SPEED	24-27 km/h	24-27 km/h	24-27 km/h	24-27 km/h
WARRANTY	4 yr limited battery warranty; 3 yr limited powertrain/frame; 2 yr limited remaining vehicle	3 yr/3000 hr limited powertrain/frame; 2 yr limited remaining vehicle	4 yr limited battery warranty; 3 yr limited powertrain/frame; 2 yr limited remaining vehicle	3 yr/3000 hr limited powertrain/frame; 2 yr limited remaining vehicle





**CARRYALL 550 TURF**



**CARRYALL 700 TURF**

	CARRYALL 550 TURF		CARRYALL 700 TURF	
POWER SOURCE	ELECTRIC	GASOLINE	ELECTRIC	GASOLINE
ENGINE/MOTOR TYPE	48-volt DC	Subaru, 4-cycle	48-volt DC	Subaru, 4-cycle
CONTROLLER	500 Amp - Solid State	NA	500 Amp - Solid State	NA
DISPLACEMENT	NA	404 cc	NA	404 cc
CYLINDERS	NA	Single	NA	Single
VALVING	NA	Overhead Cam	NA	Overhead Cam
COOLING	NA	Air Cooled	NA	Air Cooled
HORSEPOWER (RATED)	3.7 hp (2.7kW) rated, Peak 20 hp (14.9 kW)	14.0 hp (10.3 kW) rated @ 3600 RPM per SAE J1940	3.7 hp (2.7kW) rated, Peak 20 hp (14.9 kW)	14.0 hp (10.3 kW) rated @ 3600 RPM per SAE J1940
MAX TORQUE	71 ft-lb (96.2 N-m) rated @ 1450 RPM	19.91 ft lb (27.0 N-m) rated @ 2400 RPM	71 ft-lb (96.2 N-m) rated @ 1450 RPM	19.91 ft lb (27.0 N-m) rated @ 2400 RPM
LUBRICATION	NA	Splash lubrication	NA	Splash lubrication
GOVERNOR	NA	Ground Speed	NA	Ground Speed
TRANSMISSION	Direct drive, double reduction helical gear	Continuously Variable Transmission (CVT)	Direct drive, double reduction helical gear	Continuously Variable Transmission (CVT)
FRONT/REAR DIFFERENTIAL	NA	NA	NA	NA
GEAR SELECTION	Forward/Neutral/Reverse	Forward/Neutral/Reverse	Forward/Neutral/Reverse	Forward/Neutral/Reverse
GEAR RATIO	12.32:1	11.47:1 forward; 15.63:1 reverse	12.32:1	11.47:1 forward; 15.63:1 reverse
IGNITION	NA	Electronic	NA	Electronic
BATTERY	Eight 6-volt Flooded Lead Acid	12-volt 500 CCA 105 min Reserve	Eight 6-volt Flooded Lead Acid	12-volt 500 CCA 105 min Reserve
CHARGER	DeltaQ QuiQ (1 kW High Frequency)	NA	DeltaQ QuiQ (1 kW High Frequency)	NA
HEADLIGHTS	Two 37.5 Watt Halogen	Two 37.5 Watt Halogen	Two 37.5 Watt Halogen	Two 37.5 Watt Halogen
FUEL DELIVERY SYSTEM	NA	Electronic Fuel Injection (EFI)	NA	Electronic Fuel Injection (EFI)
FUEL CAPACITY	NA	17.4 L	NA	17.4 L
STEERING MECHANISM	Self-adjusting Rack and Pinion	Self-adjusting Rack and Pinion	Self-adjusting Rack and Pinion	Self-adjusting Rack and Pinion
SUSPENSION (FRONT)	Independent leaf spring with dual hydraulic shocks	Independent leaf spring with dual hydraulic shocks	Independent leaf spring with dual hydraulic shocks	Independent leaf spring with dual hydraulic shocks
SUSPENSION (REAR)	Semi-independent leaf spring with dual hydraulic shocks	Semi-independent leaf spring with dual hydraulic shocks	Semi-independent leaf spring with dual hydraulic shocks	Semi-independent leaf spring with dual hydraulic shocks
BRAKES	4-wheel Mechanical Drum	4-wheel Mechanical Drum	4-wheel Mechanical Drum	4-wheel Mechanical Drum
PARK BRAKE	Foot Operated, Multi-lock	Foot Operated, Multi-lock	Foot Operated, Multi-lock	Foot Operated, Multi-lock
BODY (FRONT & FINISH)	ArmorFlex with automotive paint/clearcoat	ArmorFlex with automotive paint/clearcoat	ArmorFlex with automotive paint/clearcoat	ArmorFlex with automotive paint/clearcoat
BODY (FRAME AND REAR)	Aluminum	Aluminum	Aluminum	Aluminum
TIRES (FRONT)	22 x 10-10, 4-ply Turf tread; 22 x 10-10, 6-ply heavy-duty all-terrain	22 x 10-10, 4-ply Turf tread; 22 x 10-10, 6-ply heavy-duty all-terrain	20 x 10-10, 6-ply	20 x 10-10, 6-ply
TIRES (REAR)	22 x 10-10, 4-ply Turf tread; 22 x 10-10, 6-ply heavy-duty all-terrain	22 x 10-10, 4-ply Turf tread; 22 x 10-10, 6-ply heavy-duty all-terrain	20 x 10-10, 6-ply	20 x 10-10, 6-ply
WHEELBASE	198.3 cm	198.3 cm	251.7 cm	251.7 cm
OVERALL HEIGHT	130.0 cm	130.0 cm	119.6 cm	119.6 cm
OVERALL LENGTH	299.7cm	299.7cm	349.3 cm	349.3 cm
BED L X W X H (CARGO BOX)	112.2 x 120.6 x 26.6 cm	112.2 x 120.6 x 26.6 cm	166.3 x 120.6 x 26.6cm	166.3 x 120.6 x 26.6cm
DIFFERENTIAL GROUND CLEARANCE	15.2 cm	15.2 cm	14.2 cm	13.2 cm
TRACK WIDTH (FRONT)	92.9 cm	92.9 cm	92.9 cm	(92.9 cm
TRACK WIDTH (REAR)	100.3 cm	100.3 cm	100.3 cm	100.3 cm
MAX WIDTH (W/O MIRRORS)	127.7cm	127.7cm	127.7cm	127.7cm
CURB WEIGHT (W/ BATTERIES)	635.9 kg	427.2 kg	669 kg	450.4 kg
TOTAL VEHICLE CAPACITY	408.2 kg	408.2 kg	680.3 kg	680.3 kg
BED LOAD CAPACITY	226.7 kg	226.7 kg	453.5 kg	453.5 kg
TOWING CAPACITY	408.2 kg	408.2 kg	680.3 kg	680.3 kg
COMBINED GROSS VEHICLE CAPACITY	408.2 kg	408.2 kg	680.3 kg	680.3 kg
SPEED	24-27 km/h	24-27 km/h	24-27 km/h	24-27 km/h
WARRANTY	4 yr limited battery warranty; 3 yr limited powertrain/frame; 2 yr limited remaining vehicle	3 yr/3000 hr limited powertrain/frame; 2 yr limited remaining vehicle	4 yr limited battery warranty; 3 yr limited powertrain/frame; 2 yr limited remaining vehicle	3 yr/3000 hr limited powertrain/frame; 2 yr limited remaining vehicle



### CARRYALL 1500 4x2\*

POWER SOURCE	GASOLINE
ENGINE	Kawasaki 4-cycle, industrial grade
CONTROLLER	NA
DISPLACEMENT	675 cc
CYLINDERS	Twin-cylinder
VALVING	OHV
COOLING	Air Cooled
HORSEPOWER (RATED)	20.1 hp (15.0 kW) rated @ 3400 RPM per SAE J1349
MAX TORQUE	49.5 Nm
LUBRICATION	Full-pressure, spin-on oil filter
GOVERNOR	Automatic ground speed sensing
TRANSMISSION	Wide ratio CVT; 3.7:1 low, 0.59:1 high
FRONT/REAR DIFFERENTIAL	Automatic locking rear differential
GEAR SELECTION	Forward/Neutral/Reverse
GEAR RATIO	5.39:1 forward, 7.79:1 reverse, 3.3:1 differential
IGNITION	Transistorized magneto
BATTERY	12-volt 500 CCA 105 min Reserve
CHARGER	NA
HEADLIGHTS	Headlights standard
FUEL DELIVERY SYSTEM	Carburetor
FUEL CAPACITY	24.6 L
STEERING MECHANISM	Rack and pinion with Tilt Steering
SUSPENSION (FRONT)	Independent double A-arms with coil-over shocks
SUSPENSION (REAR)	Semi-independent 4-link solid axle
BRAKES	4-wheel, hydraulic disc
PARK BRAKE	Automotive style
BODY (FRONT & FINISH)	GE Geloy high-impact, scratch-resistant, injection molded color, Automotive finish
BODY (FRAME AND REAR)	Tubular aluminum
TIRES (FRONT)	4-ply Turf; 23 x 10.5 x 12
TIRES (REAR)	4-ply Turf; 24 x 10.5 .x 12
WHEELBASE	225.3 cm
OVERALL HEIGHT	133.5 cm
OVERALL LENGTH	316.5 cm
BED L X W X H (CARGO BOX)	124 x 126.5 x 27.7 cm
DIFFERENTIAL GROUND CLEARANCE	18.5 cm
TRACK WIDTH (FRONT)	124 cm
TRACK WIDTH (REAR)	124 cm
MAX WIDTH (W/O MIRRORS)	148.5 cm
CURB WEIGHT (NO BATTERIES)	39.57 kg
TOTAL VEHICLE CAPACITY	658 kg/1862 kg**
BED LOAD CAPACITY	476.3 kg/680.3 kg**
TOWING CAPACITY	658 kg/862 kg**
COMBINED VEHICLE CAPACITY	658 kg/862 kg**
SPEED	30.6 km/h
TURNING RADIUS	3.8 m
WARRANTY	2-year/2,000 hour limited

\* Not available in the EU and other countries requiring CE mark

\*\*3/4 -ton option

\*\*\* High-capacity option



# SPECIFICATIONS



**CARRYALL 1500 4x4**



**CARRYALL 1700 4x4**

POWER SOURCE	DIESEL	DIESEL
ENGINE	Kubota D722, industrial grade	Kubota D722, industrial grade
CONTROLLER	NA	NA
DISPLACEMENT	719 cc	719 cc
CYLINDERS	3-cylinder	3-cylinder
VALVING	OHV	OHV
COOLING	Liquid-cooled	Liquid-cooled
HORSEPOWER (RATED)	20.0 hp (15.0 kW) rated @ 3600 RPM per SAE J1995	20.0 hp (15.0 kW) rated @ 3600 RPM per SAE J1995
MAX TORQUE	45 Nm	45 Nm
LUBRICATION	Full-pressure, spin-on oil filter	Full-pressure, spin-on oil filter
GOVERNOR	Automatic ground speed sensing	Automatic ground speed sensing
TRANSMISSION	Wide ratio CVT; 3.7:1 low, 0.59:1 high	Wide ratio CVT; 3.7:1 low, 0.59:1 high
FRONT/REAR DIFFERENTIAL	IntelliTrak™ Automatic 4-wheel Drive	IntelliTrak™ Automatic 4-wheel Drive
GEAR SELECTION	Forward/Neutral/Reverse	Forward/Neutral/Reverse
GEAR RATIO	5.39:1 forward, 7.79:1 reverse, 3.3:1 differential	5.39:1 forward, 7.79:1 reverse, 3.3:1 differential
IGNITION	Compression	Compression
BATTERY	12-volt 500 CCA 105 min Reserve	12-volt 500 CCA 105 min Reserve
CHARGER	NA	NA
HEADLIGHTS	Headlights standard	Headlights standard
FUEL DELIVERY SYSTEM	Mechanical injection	Mechanical injection
FUEL CAPACITY	24.6 L	24.6 L
STEERING MECHANISM	Self-adjusting Rack and Pinion	Self-adjusting Rack and Pinion
SUSPENSION (FRONT)	Independent leaf spring with dual hydraulic shocks	Independent leaf spring with dual hydraulic shocks
SUSPENSION (REAR)	Independent leaf spring with dual hydraulic shocks	Independent leaf spring with dual hydraulic shocks
BRAKES	4-wheel, hydraulic disc	4-wheel, hydraulic disc
PARK BRAKE	Automotive style	Automotive style
BODY (FRONT & FINISH)	GE Geloy high-impact, scratch-resistant, injection molded color, Automotive finish	GE Geloy high-impact, scratch-resistant, injection molded color, Automotive finish
BODY (FRAME AND REAR)	Tubular aluminum	Tubular aluminum
TIRES (FRONT)	All-terrain, 25 x 10.5-12, 4-ply	All-terrain, 25 x 10.5-12, 4-ply
TIRES (REAR)	All-terrain, 25 x 10.5-12, 4-ply	All-terrain, 25 x 10.5-12, 4-ply
WHEELBASE	225.3 cm	225.3 cm
OVERALL HEIGHT	199.6 cm	199.6 cm
OVERALL LENGTH	316.5 cm	400.3 cm
BED L X W X H (CARGO BOX)	124 x 126.5 x 27.7 cm	124 x 126.5 x 27.7 cm
DIFFERENTIAL GROUND CLEARANCE	20.8 cm	20.8 cm
TRACK WIDTH (FRONT)	124 cm	124 cm
TRACK WIDTH (REAR)	124 cm	124 cm
MAX WIDTH (W/O MIRRORS)	148.5 cm	148.5 cm
CURB WEIGHT (NO BATTERIES)	703.1 kg	793.8 kg
TOTAL VEHICLE CAPACITY	544 kg/658 kg***	725.8 kg
BED LOAD CAPACITY	363.2 kg/658 kg***	363.2 kg
TOWING CAPACITY	544 kg/658 kg**	725.8 kg
COMBINED VEHICLE CAPACITY	544 kg/658 kg***	725.8 kg
SPEED	40.2 km/h	40.2 km/h
TURNING RADIUS	3.8 m	5.4 m
WARRANTY	2-year/2,000 hour limited	2-year/2,000 hour limited

\*There are no warranties, express or implied, contained herein. See Limited Warranty found in the owner's manual or write to Club Car, LLC. Vehicle specifications are accurate for each model at the time of publication. The company reserves the right to make design changes without obligation to make these changes on units previously sold. These vehicles are designed and manufactured for off-road use only. They do not conform to Federal Motor Vehicle Safety Standards for automobiles or to FMVSS 500 for low-speed vehicles and are not equipped for operation on public streets, roads or highways.



Ingersoll Rand is a global diversified firm providing products, services and solutions to enhance the quality and comfort of air in homes and buildings, transport and protect food and perishables, secure homes and commercial properties, and increase industrial productivity and efficiency. Driven by a 100-year-old tradition of technological innovation, we enable our customers to create progress and a positive impact in their world.

Club Car Ingersoll Rand  
Lenneke Marelaan 6B  
1932 Sint Stevens Woluwe  
Belgium  
+32 2 746 1200

[www.clubcar.com](http://www.clubcar.com)

[www.ingersollrand.com](http://www.ingersollrand.com)

1/14 58648767